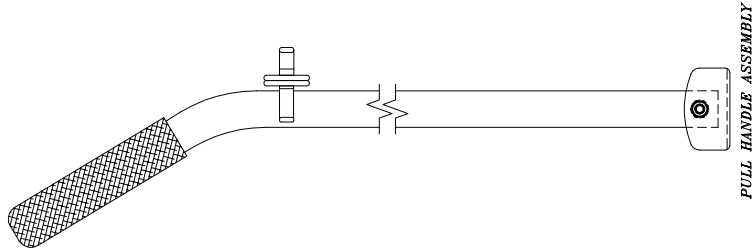
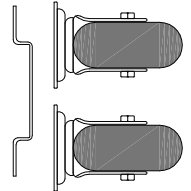


05/17 R1

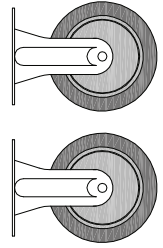
WHAT'S IN THE CARTON



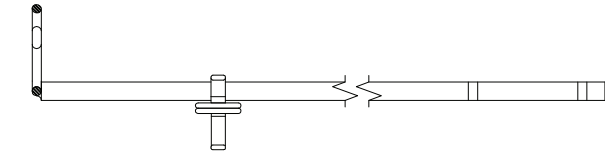
PULL HANDLE ASSEMBLY



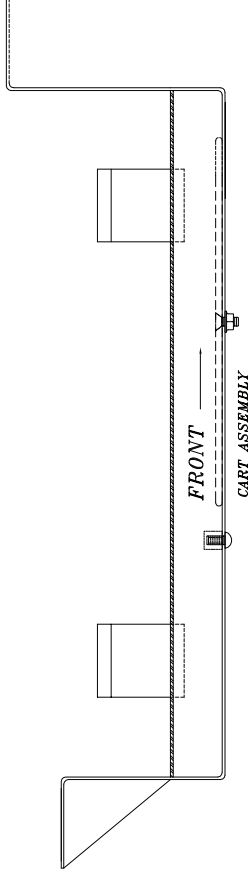
SWIVEL CASTER REAR W/ RISER BKT.



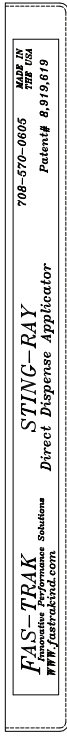
STATIONARY CASTER FRONT



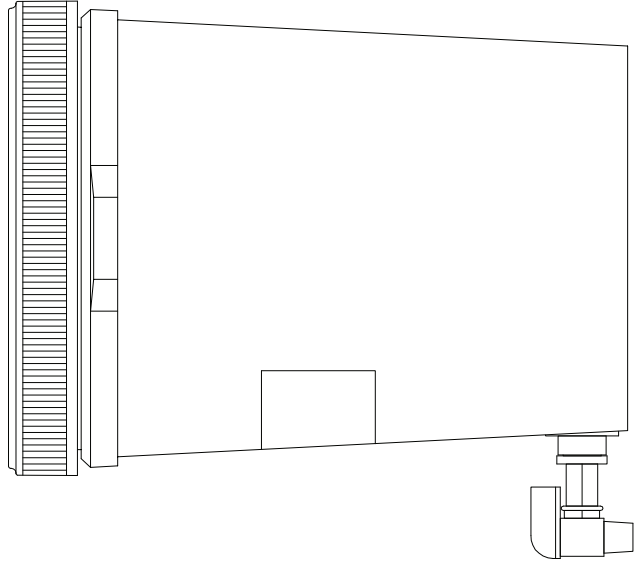
HANDLE STORAGE HOOK



FRONT  
CART ASSEMBLY



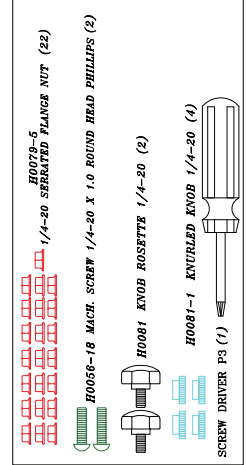
DRIP TRAY W/LABELL



SCREW TOP LIQUID PAIL



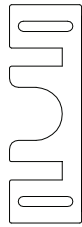
VALVE ADJUSTING ROD



HARDWARE KIT

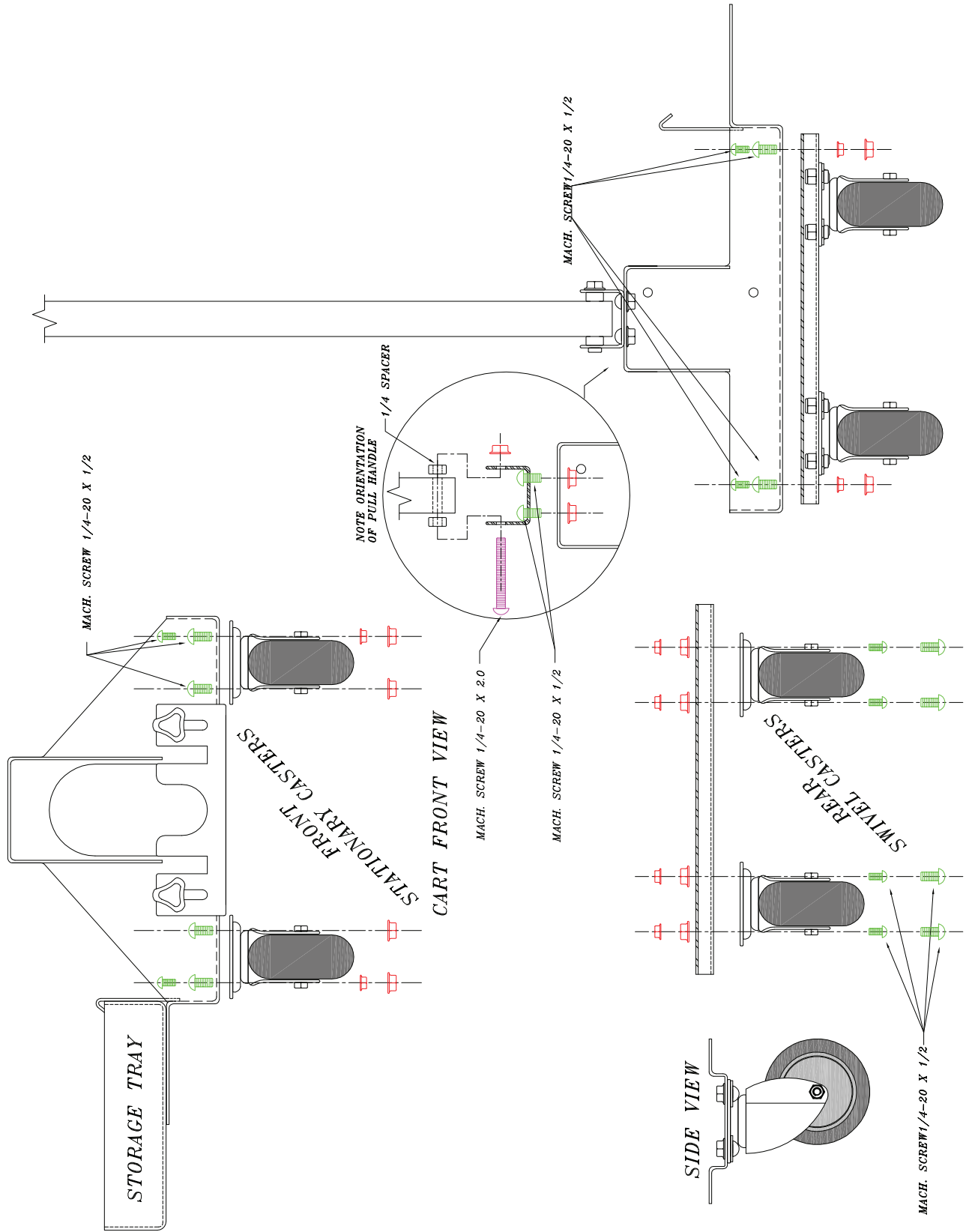


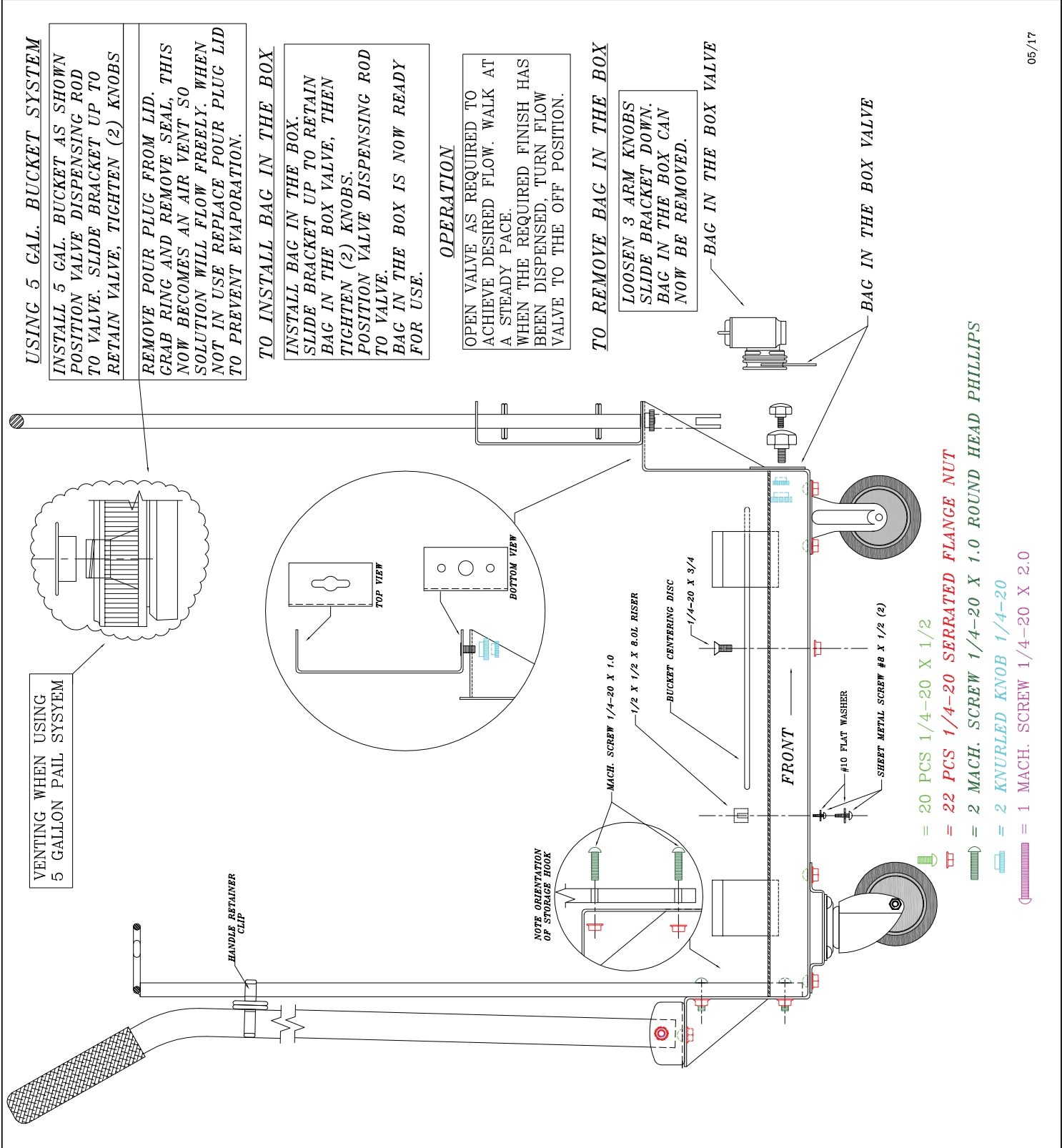
VALVE ADJUSTING BRACKET



ADJUSTING BRACKET BAG IN THE BOX

**NOTE:**  
ALL NUTS ARE 1/4-20 SERRATED FLANGED





VENTING WHEN USING  
5 GALLON PAIL SYSTEM

HANDLE RETAINER  
CLIP

NOTE: ORIENTATION  
OF STORAGE HOOK

TOP VIEW

BOTTOM VIEW

MACH. SCREW 1/4-20 X 1.0

1/2 X 1/2 X 8.0L RISER

BUCKET CENTERING DISC

1/4-20 X 3/4

FRONT

#10 FLAT WASHER

SHEET METAL SCREW #8 X 1/2 (2)

**USING 5 GAL. BUCKET SYSTEM**  
INSTALL 5 GAL. BUCKET AS SHOWN  
POSITION VALVE DISPENSING ROD  
TO VALVE. SLIDE BRACKET UP TO  
RETAIN VALVE, TIGHTEN (2) KNOBS

REMOVE POUR PLUG FROM LID.  
GRAB RING AND REMOVE SEAL, THIS  
NOW BECOMES AN AIR VENT SO  
SOLUTION WILL FLOW FREELY. WHEN  
NOT IN USE REPLACE POUR PLUG LID  
TO PREVENT EVAPORATION.

**TO INSTALL BAG IN THE BOX**  
INSTALL BAG IN THE BOX.  
SLIDE BRACKET UP TO RETAIN  
BAG IN THE BOX VALVE, THEN  
TIGHTEN (2) KNOBS.  
POSITION VALVE DISPENSING ROD  
TO VALVE.  
BAG IN THE BOX IS NOW READY  
FOR USE.

**OPERATION**  
OPEN VALVE AS REQUIRED TO  
ACHIEVE DESIRED FLOW. WALK AT  
A STEADY PACE.  
WHEN THE REQUIRED FINISH HAS  
BEEN DISPENSED, TURN FLOW  
VALVE TO THE OFF POSITION.

**TO REMOVE BAG IN THE BOX**  
LOOSEN 3 ARM KNOBS  
SLIDE BRACKET DOWN.  
BAG IN THE BOX CAN  
NOW BE REMOVED.

BAG IN THE BOX VALVE  
BAG IN THE BOX VALVE

- ➡ = 20 PCS 1/4-20 X 1 1/2
- ➡ = 22 PCS 1/4-20 SERRATED FLANGE NUT
- ➡ = 2 MACH. SCREW 1/4-20 X 1.0 ROUND HEAD PHILLIPS
- ➡ = 2 KNURLED KNOB 1/4-20
- ➡ = 1 MACH. SCREW 1/4-20 X 2.0